



MONTHLY MEMBERSHIP PROGRESS REPORT

Results as of: 7/31/2016

Multiple District 34

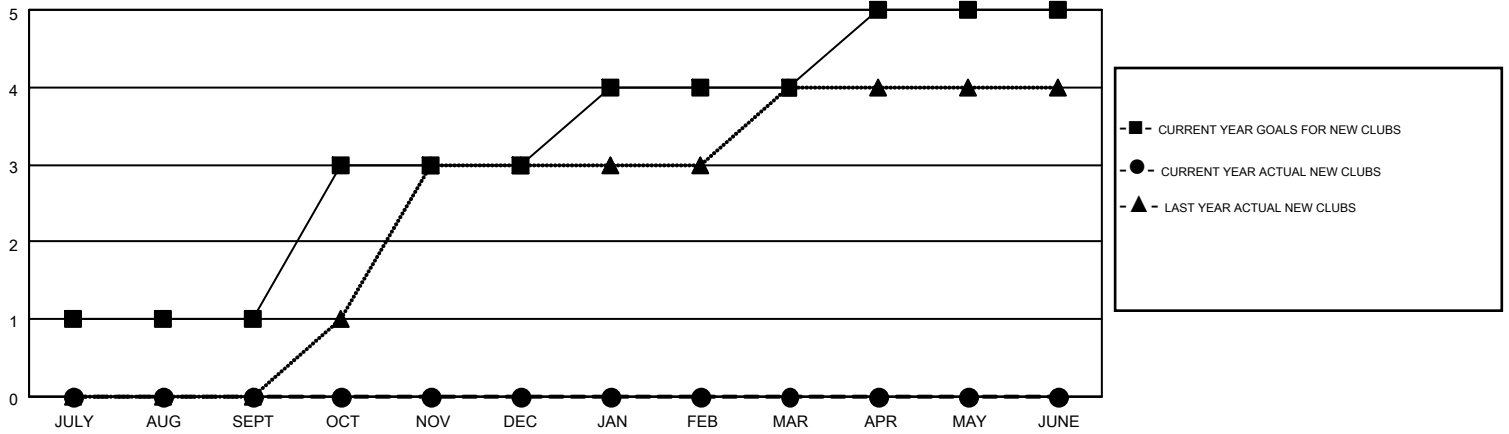
LOCATION: ALABAMA

GMT: HARVEY WHITLEY

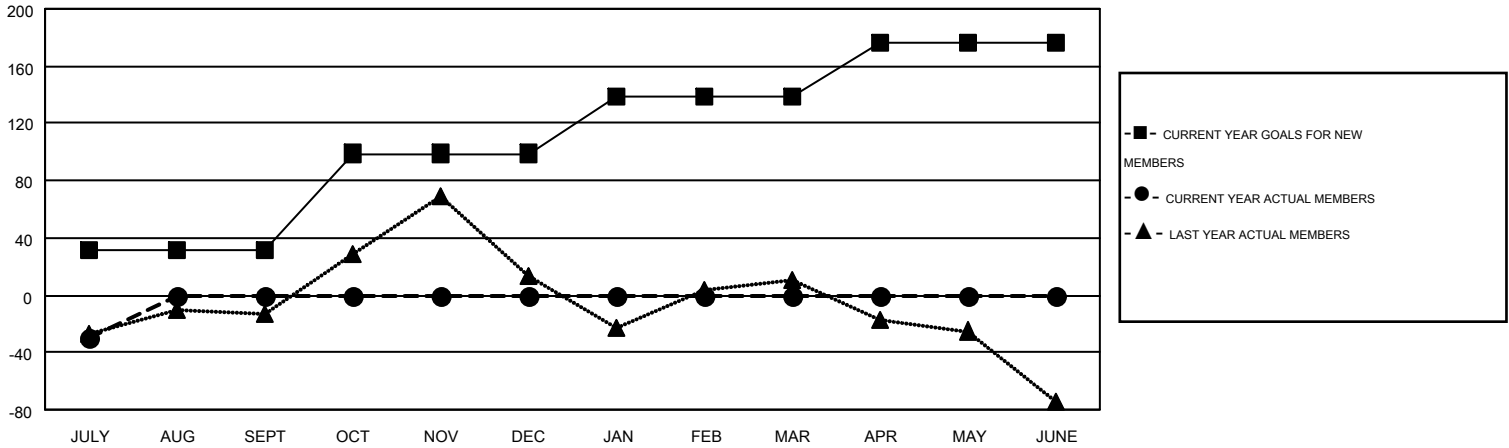
GMT CA 1

| Clubs | | | | | Members | | | | |
|-----------------------|---------------|-----------|---------------|---------------|-----------------------|-----------------|-------------------------------|-----------------|---------------|
| RESULTS FOR 2016-2017 | | | | | RESULTS FOR 2016-2017 | | | | |
| QUARTER | NEW CLUB GOAL | NEW CLUBS | DROPPED CLUBS | NET GAIN/LOSS | QUARTER | NEW MEMBER GOAL | CHARTER AND NEW MEMBERS ADDED | DROPPED MEMBERS | NET GAIN/LOSS |
| JULY/AUG/SEPT | 1 | 0 | 0 | 0 | JULY/AUG/SEPT | 31 | 26 | 56 | -30 |
| OCT/NOV/DEC | 2 | 0 | 0 | 0 | OCT/NOV/DEC | 68 | 0 | 0 | 0 |
| JAN/FEB/MAR | 1 | 0 | 0 | 0 | JAN/FEB/MAR | 40 | 0 | 0 | 0 |
| APR/MAY/JUNE | 1 | 0 | 0 | 0 | APR/MAY/JUNE | 37 | 0 | 0 | 0 |

GOALS AND ACTUAL NEW CLUBS CUMULATIVE



GOALS AND ACTUAL MEMBERS CUMULATIVE



| | | | |
|------------------------|---|----------------------------|----------------|
| DROPPED CLUBS: 0 | 15 CLUBS OF 136 ADDED 1 OR MORE NEW MEMBERS | <u>GENDER DISTRIBUTION</u> | |
| <u>DROPPED MEMBERS</u> | | MALE | 2,388 (73.12%) |
| DECEASED | CLICK HERE FOR HEALTH ASSESSMENT DATA | FEMALE | 878 (26.88%) |
| CLUB CANCELLED | | FAMILY UNIT MEMBERS | 539 |
| OTHER | | HEAD OF HOUSEHOLD | 265 |
| TOTAL | | NON-HEAD OF HOUSEHOLD | 274 |